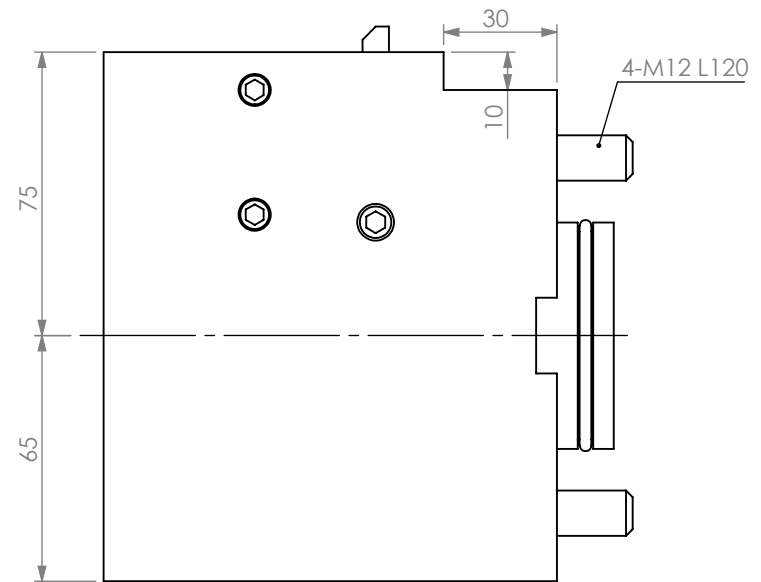


90DEG STATIC TOOL
 OUTPUT: 1.1/2" BORING BAR SPLIT TYPE
 COOLANT: EXTERNAL



ITEM	PART NO.	DESC.	QTY.
1			
2			
3			
4			
5			

PROPRIETARY AND CONFIDENTIAL

THE INFORMATION CONTAINED IN THIS DRAWING IS THE SOLE PROPERTY OF LYNDEX NIKKEN. ANY REPRODUCTION IN PART OR AS A WHOLE WITHOUT THE WRITTEN PERMISSION OF LYNDEX NIKKEN IS PROHIBITED. DRAWING SUBJECT TO CHANGE WITHOUT NOTICE.

DRAWN	NAME	DATE
BT		2/8/2021

NOTES:
 Ref# T10143

90 DEGREE STATIC 1.1/2" SPLIT TYPE BORING BAR OUTPUT



SIZE	DWG. NO.	REV.
A	MNL12-BGS15Z	

SCALE 1:2 SHEET 1 OF 1